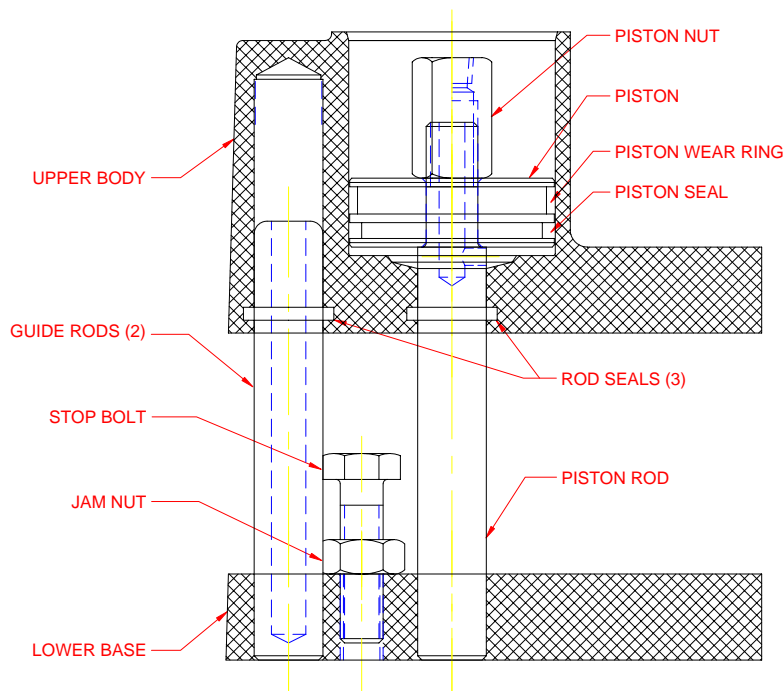


INSTRUCTIONS ON HOW TO REBUILD MINI-SERIES PRESSES

To **Disassemble** the unit use the following steps:

1. Remove **Piston Nut**
2. Slide **Upper Body** and **Piston** off the rods
3. Remove **Piston** from **Upper Body**
4. Replace **Rod Seals**, **Piston Seal** and **Piston Wear Ring** as required. Put light coating of petroleum jelly on all **Seals** and **Wear Ring**
5. Put light coating of petroleum jelly on all **Rods** and **Cylinder Bore**.

To **Assemble** the unit use above steps 1, 2 & 3 in reverse order to complete installation.



The minimum supply air line should be nominal 3/8" I.D. hose or tubing with 50 to 100 PSI air pressure.